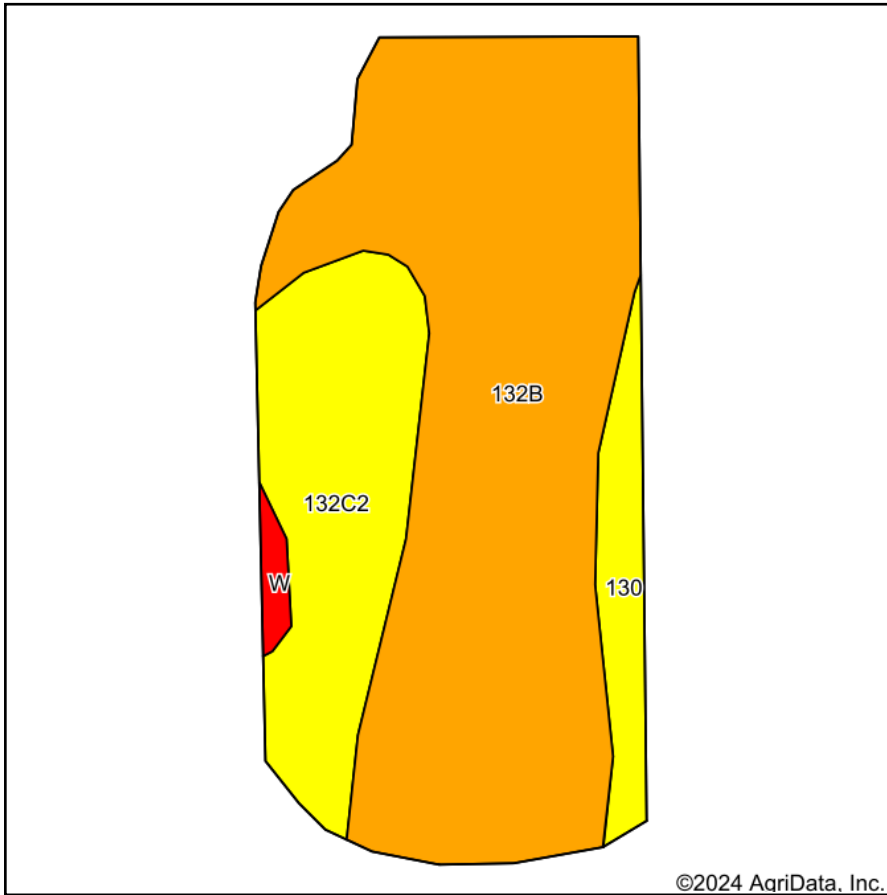
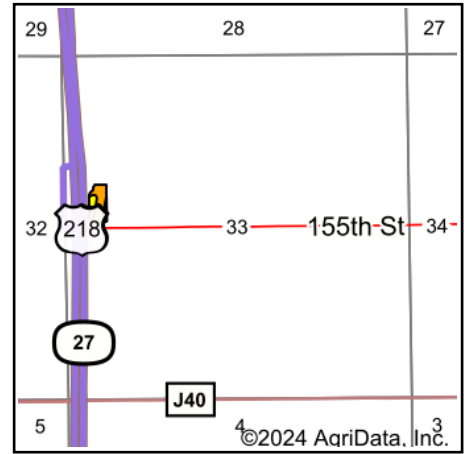


Soils Map



Soils data provided by USDA and NRCS.



State: **Iowa**
 County: **Lee**
 Location: **33-69N-6W**
 Township: **Marion**
 Acres: **3.39**
 Date: **5/9/2024**






Maps Provided By:

 CUSTOMIZED ONLINE MAPPING
 © AgriData, Inc. 2023 www.AgriDataInc.com



Area Symbol: IA111, Soil Area Version: 32

Code	Soil Description	Acres	Percent of field	CSR2 Legend	Non-Irr Class *c	CSR2**	CSR
132B	Weller silt loam, 2 to 5 percent slopes	2.36	69.6%		IIIe	67	60
132C2	Weller silt loam, 5 to 9 percent slopes, moderately eroded	0.80	23.6%		IIIe	59	40
130	Belinda silt loam, 0 to 2 percent slopes	0.23	6.8%		IIIw	47	63
Weighted Average					3.00	63.8	55.5

**IA has updated the CSR values for each county to CSR2.

*c: Using Capabilities Class Dominant Condition Aggregation Method